



This is a social story guide about **A LADDER TO THE STARS.**



This is a social story guide to attending sensory friendly performances during Žigužajg.

The guide is intended to help prepare you for a new experience and help you to become familiar with the surroundings and the performance.

**Welcome to the Teatru
Manoel's Studio Theatre.**

**Entrance at Old Mint
Street. This is what the
building looks like from
the outside.**



**You will be met by
our assistants.**

**- The assistants
will be wearing a
t-shirt like this
picture.**



- You can ask an assistant if you have any questions and they will do their best to help you.

- When it's time for the show to start, the assistants will guide you to the theatre.



When you enter through the front door, the festival assistant will approach you and guide you to the lift to go up to the theatre on the 2nd floor.

You will not see the lift from the entrance but a desk.



As soon as you go out from the lift, you see on your right the door which will lead you to the theatre.

And you will walk through this door to get inside the theatre.




**This is the theatre from
inside. It may be a little bit
dark inside but not too
dark**



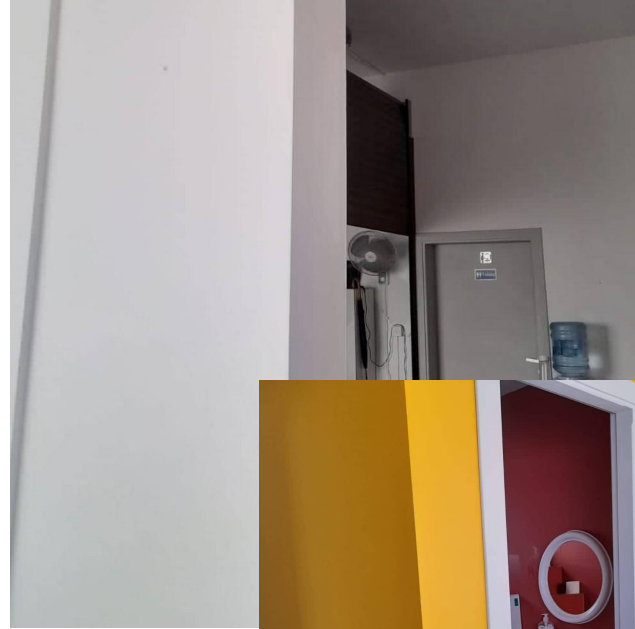
There will be an area for you if you need a break during the performances.

It will have sofas that you can use the area during the performance.

You can come back to the show whenever you are ready.



If you need to use the restrooms, you need to go out of the theatre and on your left you will find a small room, you enter that room and you will find a door marked with the restrooms sign.





What will happen during the show:

- You will hear a person make an announcement that the performance is about to begin.
- This is the start of the show.
- During the show you might find something funny, you can laugh if you like. 😊
- During the show you might see or hear something that makes you feel sad. You can feel sad if you like, that's okay. 😞



What will happen during the show:

- You might hear other people in the audience cheer, clap, shout out or scream. You can join in if you like.
- During the show you might feel that you need to take some time out. You can leave the performing space and go to the space for breaks.
- You can return to the show when you feel ready.
- At the end of the show the actors will come out and take a bow. This is the last part of the show.



What will happen during the show:

- You can clap if you want to.
- The actors will exit the stage.
- This is the end of the show.
- You can now leave the premises. You can take the same route you took when coming in.

Here is what A Ladder to the Stars will look like.

