



# This is a social story guide about **GULLIVER.**



**This is a social story guide to attending sensory friendly performances during Žigužajg.**

**The guide is intended to help prepare you for a new experience and help you to become familiar with the surroundings and the performance.**

---

**Welcome to the Teatru  
Manoel's Studio Theatre.**

**Entrance at Old Mint  
Street. This is what the  
building looks like from  
the outside.**



---

**You will be met by  
our assistants.**

**- The assistants  
will be wearing a  
t-shirt like this  
picture.**



---

**- You can ask an assistant if you have any questions and they will do their best to help you.**

**- When it's time for the show to start, the assistants will guide you to the theatre.**



---

**When you enter through the front door, the festival assistant will approach you and guide you to the lift to go up to the theatre on the 2nd floor.**

**You will not see the lift from the entrance but a desk.**



---

**As soon as you go out from the lift, you see on your right the door which will lead you to the theatre.**

**And you will walk through this door to get inside the theatre.**



**This is the theatre from inside. It may be a little bit dark inside but not too dark**





---

**There will be an area for you if you need a break during the performances.**

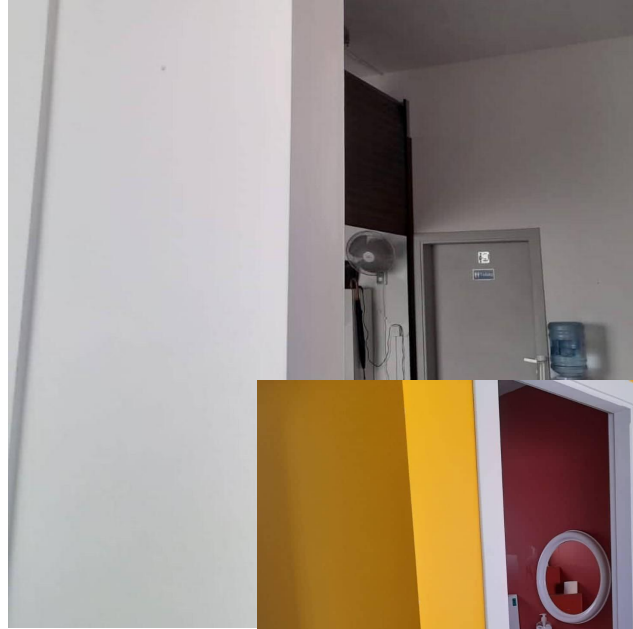
**It will have sofas that you can use the area during the performance.**

**You can come back to the show whenever you are ready.**



---

**If you need to use the restrooms, you need to go out of the theatre and on your left you will find a small room, you enter that room and you will find a door marked with the restrooms sign.**





## What will happen during the show:

- You will hear a person make an announcement that the performance is about to begin.
- This is the start of the show.
- During the show you might find something funny, you can laugh if you like. 😊
- During the show you might see or hear something that makes you feel sad. You can feel sad if you like, that's okay. 😞



## What will happen during the show:

- You might hear other people in the audience cheer, clap, shout out or scream. You can join in if you like.
- During the show you might feel that you need to take some time out. You can leave the performing space and go to the space for breaks.
- You can return to the show when you feel ready.
- At the end of the show the actors will come out and take a bow. This is the last part of the show.



## What will happen during the show:

- You can clap if you want to.
- The actors will exit the stage.
- This is the end of the show.
- You can now leave the premises. You can take the same route you took when coming in.

Here is what Gulliver will look like.

